

# oakheart



£350,000

Guide Price

Dickenson Road, Colchester





Guide Price £350,000 - £375,000

Situated on the sought-after Dickenson Road in North Colchester, this spacious and well-presented four-bedroom, two-bathroom semi-detached home offers an excellent opportunity for families and professionals alike. Ideally located within close proximity to Colchester General Hospital, the Northern Gateway Leisure Park, the A12, and Colchester North Station—providing direct links to London Liverpool Street—this home is perfect for commuters and those seeking convenience.

Upon entering, you are welcomed into a bright and inviting hallway leading to

a generous living room. This stylish space features a modern media wall with integrated storage, an electric fireplace, and patio doors that open out onto the rear garden, creating a seamless flow between indoor and outdoor living. The ground floor also benefits from a WC and a versatile dining room, currently used as a home office. The modern U-shaped kitchen diner boasts sleek contemporary units, high-quality worktops, and integrated appliances, with a side door providing easy access to the garden.

Upstairs, the principal bedroom is a standout feature, complete with built-in wardrobes and a modern en-suite shower room. There are three further well-proportioned bedrooms, all of which are ideal for family living or guest

accommodation. The stylish family bathroom is fitted with a bathtub and overhead shower, WC, and wash basin, offering both practicality and contemporary design.

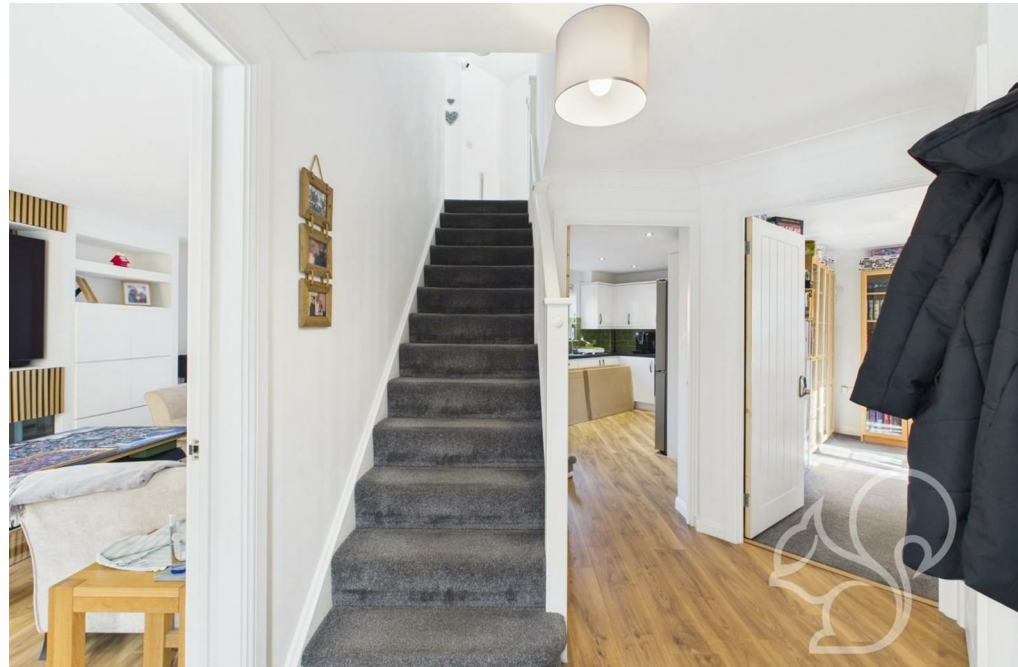
Outside, the property enjoys a generous enclosed rear garden, thoughtfully designed with an extended patio, lawn, and stone area—perfect for outdoor entertaining. Rear access leads directly to the garage and off-road parking, ensuring convenience and security.

This beautifully presented home is move-in ready and offers an ideal blend of modern living and accessibility.













GIRAFFE360

**oakheart**